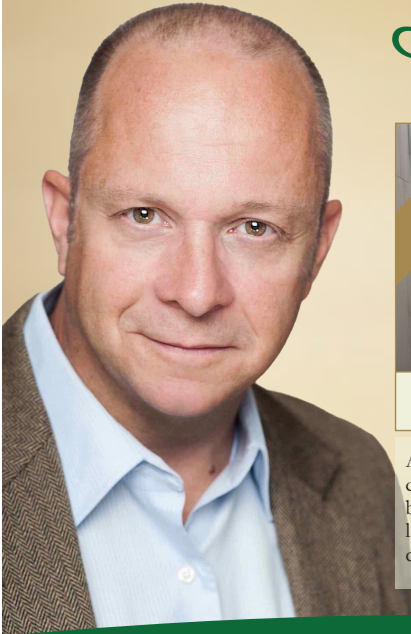


# I Love To Lease



**YONGE & EGLINTON**

At stylish Art Shoppe. Courtyard-quiet comes standard in this 1 bedroom plus den. Successfully leased with rapid occupancy in a competitive market.



**ST. CLAIR WEST**

Luxurious Imperial Plaza. Superb 1 bedroom soaking in natural light. Negotiated excellent lease terms for tenant client.

**YOU'LL LOVE ME FOR:**

- WIDE MARKETING
- QUALITY TENANTS
- QUALITY SUITES
- PERSONAL SERVICE
- STRONG NEGOTIATION



REALTOR®

**STEVE MITCHELL**

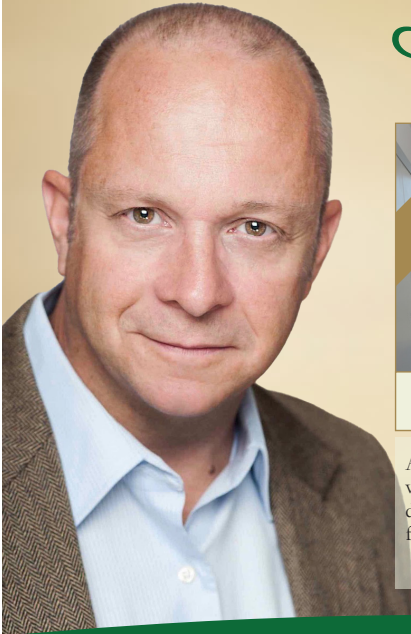
o 416.489.2121 c 647.291.8151  
steve@stevemitchellhomes.ca



**JOHNSTON  
&  
DANIEL**

A DIVISION OF ROYAL LEPAGE REAL  
ESTATE SERVICES LTD. BROKERAGE

# I Love To Lease



**YONGE & EGLINTON**

Art Shoppe condo boasts spectacular view from this big 1 bedroom plus den. Obtained 99% of asking rent for landlord client.



**DON MILLS & FINCH**

Perfect for down-sizers. Sprawling 1700 sq ft. 2bed+family room at Skymark. All utilities included, parking, plus incredible amenities. Won't last!

**YOU'LL LOVE ME FOR:**

- WIDE MARKETING
- QUALITY TENANTS
- QUALITY SUITES
- PERSONAL SERVICE
- STRONG NEGOTIATION



REALTOR®

**STEVE MITCHELL**

o 416.489.2121 c 647.291.8151  
steve@stevemitchellhomes.ca



Not intended to solicit clients under contract with another brokerage.



**JOHNSTON  
&  
DANIEL**

A DIVISION OF ROYAL LEPAGE REAL ESTATE SERVICES LTD. BROKERAGE